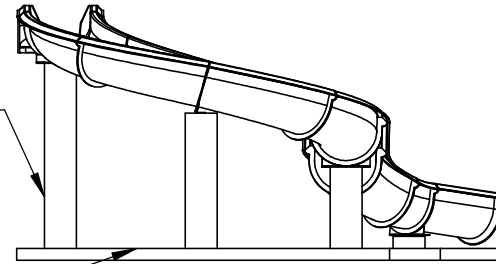


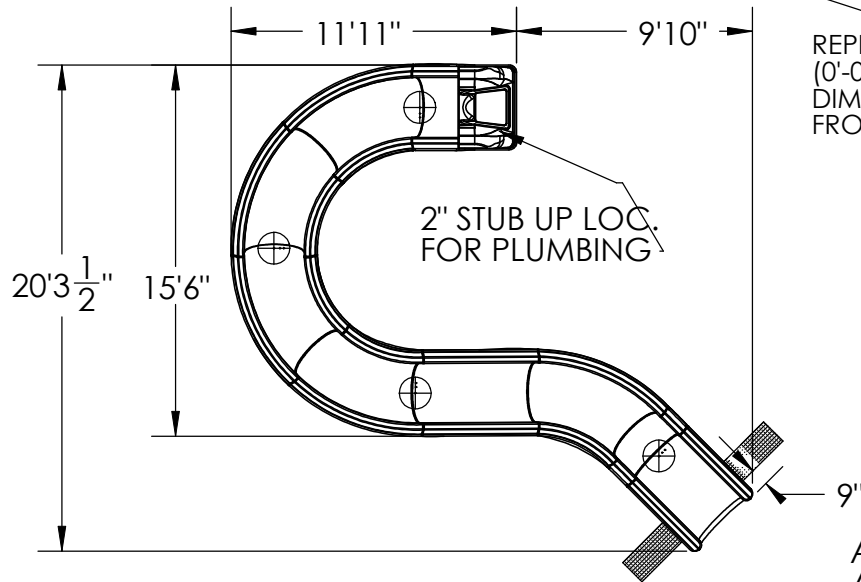
FRONT

PIER ELEVATION SPECIFIED IN CONSTRUCTION DRAWINGS, DEPTH DETERMINED BY LOCAL FROST DEPTH

8'-2"

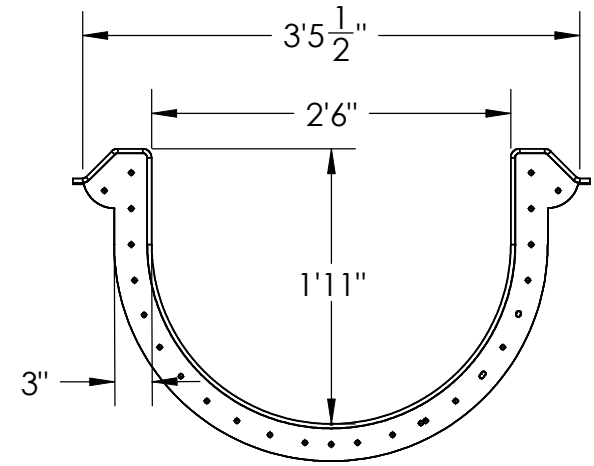


LEFT



TOP

REPRESENTS POOL COPING (0'-0") ALL ELEVATION DIMENSIONS ARE DERIVED FROM THIS LINE



FLUME DIMENSIONS

ALL 32" OPEN FLUME SLIDES ARE CONSTRUCTED OF LAMINATED FIBERGLASS REINFORCED MARINE GELCOAT SURFACE.

MATERIAL THICKNESS: 1/4"-3/8"

FLUME TYPE	OPEN
CL LENGTH	39'-1 1/2"
ELEVATION	8'-2"
ENTRY ANGLE	15°
SLOPE	22.30%
FALL PER FOOT	2.68"
GPM REQUIRED	150-200
WATER DEPTH	3'-6" MINIMUM

TITLE: **RB32-39**

SIZE  
**A**

**PRE-DESIGN**

REV



PO Box 486 P: 731.632.1407  
Adamsville, TN 38310 F: 731.632.3739

www.dolphinwaterslides.net  
sales@dolphinwaterslides.net

DRAWN 8.Thomas 7/16/2009

**PROPRIETARY AND CONFIDENTIAL**

THE INFORMATION CONTAINED IN THIS DRAWING IS THE SOLE PROPERTY OF DOLPHIN WATERSLIDES, INC. ANY REPRODUCTION IN PART OR AS A WHOLE WITHOUT THE WRITTEN PERMISSION OF DOLPHIN WATERSLIDES, INC IS PROHIBITED.