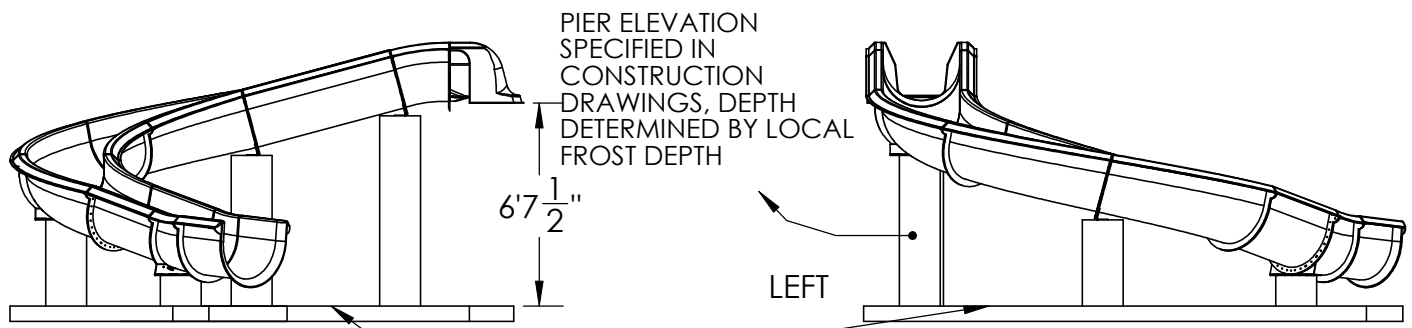
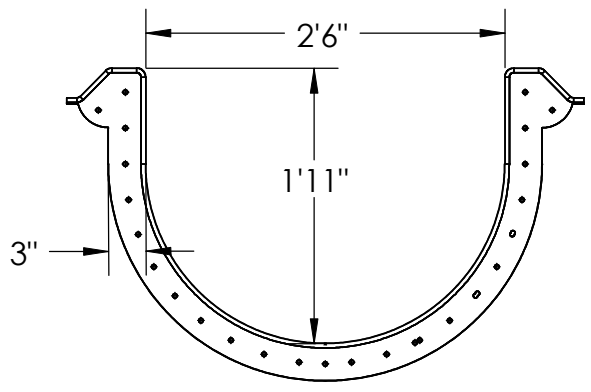


FRONT

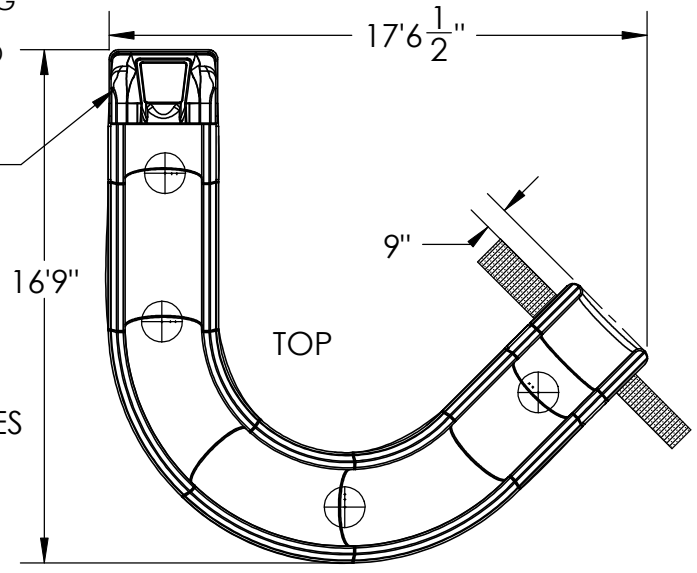


REPRESENTS POOL COPING (0'-0") ALL ELEVATION DIMENSIONS ARE DERIVED FROM THIS LINE



FLUME DIMENSIONS

2" STUB UP LOC. FOR PLUMBING



ALL 32" OPEN FLUME SLIDES ARE CONSTRUCTED OF LAMINATED FIBERGLASS REINFORCED MARINE GELCOAT SURFACE.

MATERIAL THICKNESS: 1/4"-3/8"

FLUME TYPE	OPEN
CL LENGTH	30'-8 1/4"
ELEVATION	6'-9 1/2"
ENTRY ANGLE	15°
SLOPE	23.77%
FALL PER FOOT	2.85"
GPM REQUIRED	150-175
WATER DEPTH	3'-6" MINIMUM

TITLE: RB32-31	
SIZE A	PRE-DESIGN
REV	



PO Box 486
Adamsville, TN 38310
www.dolphinwaterslides.net
sales@dolphinwaterslides.net

P: 731.632.1407
F: 731.632.3739

PROPRIETARY AND CONFIDENTIAL
THE INFORMATION CONTAINED IN THIS DRAWING IS THE SOLE PROPERTY OF DOLPHIN WATERSLIDES, INC. ANY REPRODUCTION IN PART OR AS A WHOLE WITHOUT THE WRITTEN PERMISSION OF DOLPHIN WATERSLIDES, INC IS PROHIBITED.